

Feedback review on

Trauma in Perspective Lecture

delivered by Mr. Simon Derby

at Holy Family Hospital, Nkawkaw

On October 13th, 2008

Review done by

Dr Kofi Amu-Darko

Of behalf of

Motoclife-UK audit team

1st January 2009

Contents

- Contents.....2
- Introduction3
- Background.....3
- Characteristics of lecture attendants4
- Lecture Experience6
- Comments and suggestions8
 - Prior experience of Moteclife-UK8
 - What was particularly good about this lecture?8
 - What could have been improved?9
 - Future lecture topics9
- Conclusions10

Introduction

Mr. Simon Debbie gave a lecture to the students of Holy Family Hospital Nursing Training College on the 13th October 2008. This was the first lecture during the Moteclife visit in October 2008. The following is an analysis of the returned questionnaires from those attending the lecture.

Background

The town of Nkawkaw is roughly midpoint on the trunk road linking the Ghanaian capital, Accra and the second city Kumasi. The town is placed to manage victims from road traffic accidents on this long stretch of trunk road, since it is at least two hours by road from either city.

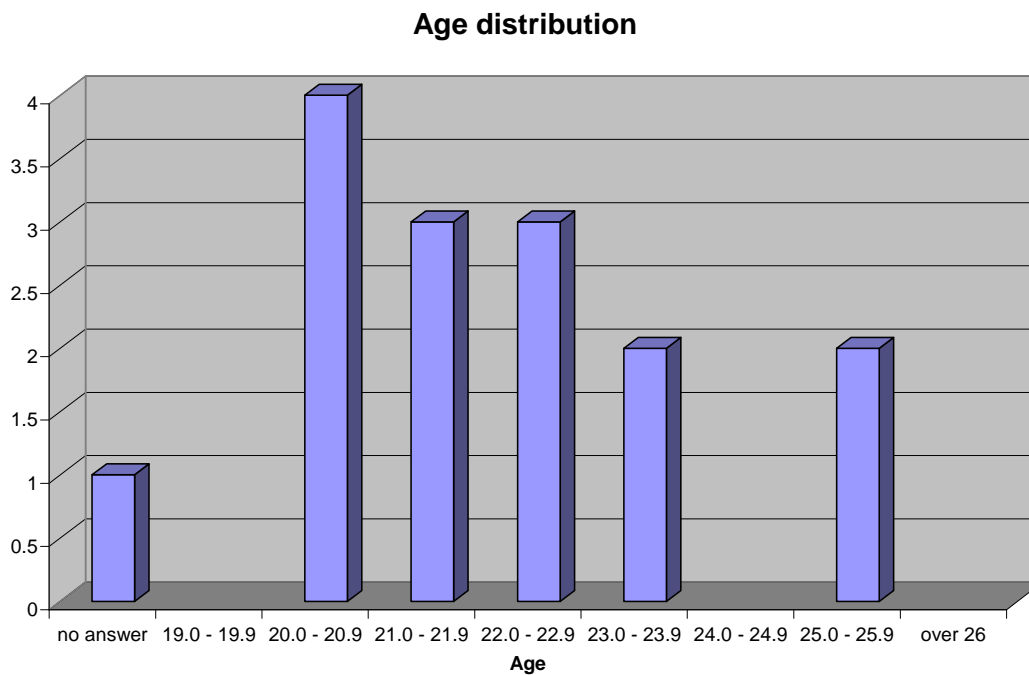
The Holy Family Hospital is a District General Hospital run by the sisters of the Holy Spirit Congregation, headquartered in Holland¹. It has a Nursing Training College. The timing for the lectures was often between 4.00pm – 5pm because that was when the use of the College lecture hall came to an end.

¹ See Previous report By Rosemary Doogan on Moteclife website – moteclife.co.uk

Characteristics of lecture attendants

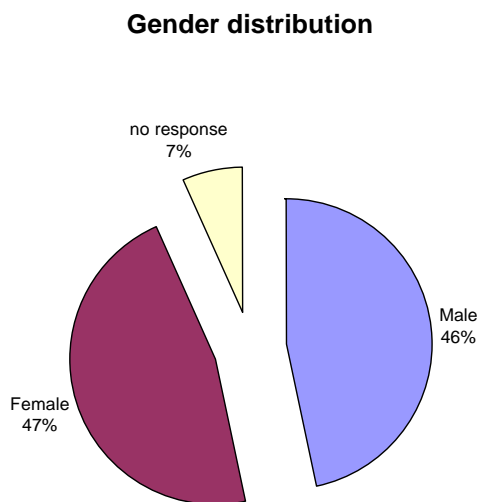
As mentioned above this lecture was attended predominantly by nursing students although it was opened to all medical staff. The students were aged between 20 and 26 years. See Fig 1 below.

Fig. 1



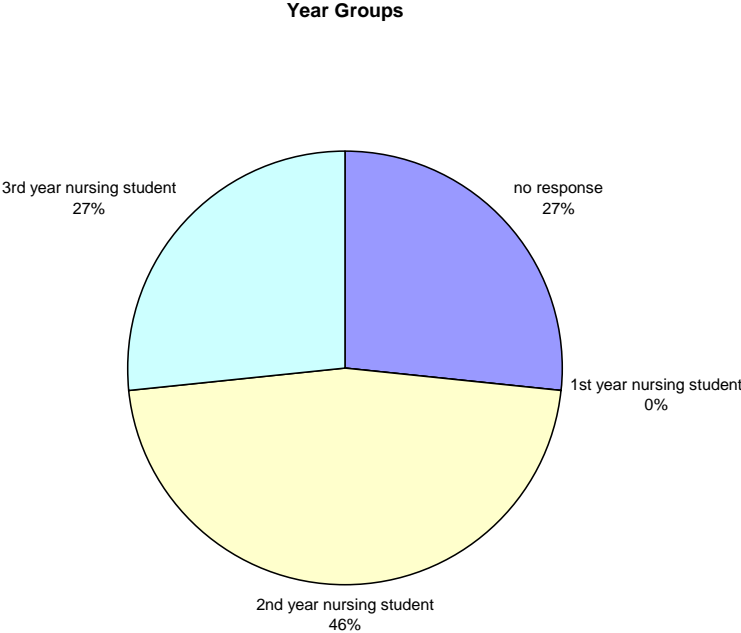
There were as many males as female respondents. Generally there are usually more female students than male students in Ghanaian nursing schools. See Fig. 2 below.

Fig. 2



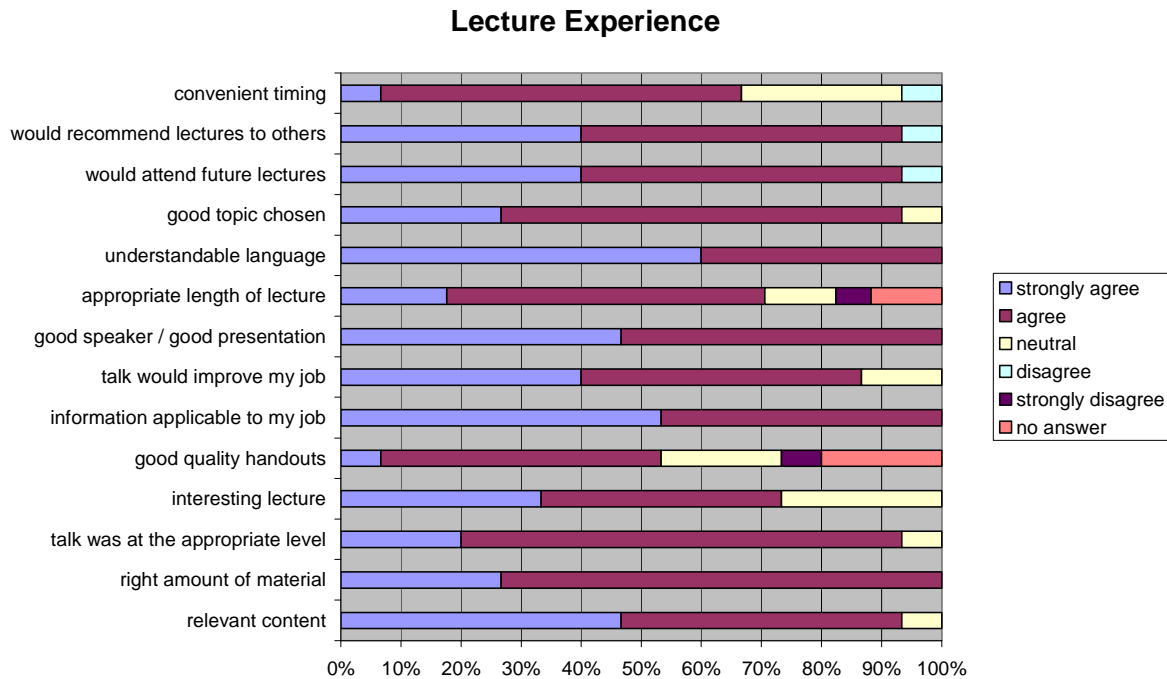
There were nearly twice as many second year students (46%) as third year students (27%). However another 27% of the questionnaires drew no response on this question. See Fig. 3

Fig. 3



Lecture Experience

Fig. 4



This lecture drew at least 70% approval rating except for the issue of handouts, which got about 55%. Most of the ratings were much higher.

Specifically, 95% of respondents found the content of the lecture relevant and 65% found the timing convenient. 95% said the lecture topic was a good one. 100% said that the lecture had the right amount of material and 70% of respondents said the lecture was of the right length. 100% of respondents said that the language used was easily understood. 95% said that the lecture was at the appropriate level and just over 70% thought the lecture was interesting.

100% of respondents thought the speaker was good and / or gave a good presentation. 95% would attend future lectures and the same number would recommend the lecture to others. In either question, remaining 5% disagreed.

100% of respondents found the information they received applicable to their work and 95% said that the lecture on “trauma in perspective” would enable them do their work better.

As mentioned earlier just over 50% of respondents “agreed” that the handouts were of good quality but only 5% “disagreed”. 20% were neutral on this issue of lecture handouts and there was no response given on 20% of returned questionnaires.

Comments and suggestions

Respondents were asked if they had encountered Moteclife-UK in any way previously before this trip. In addition they were asked to provide comments on

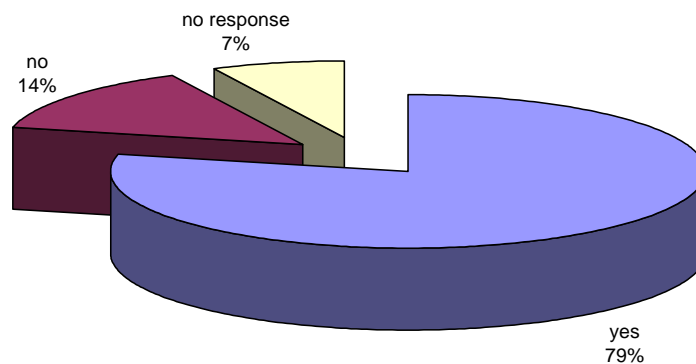
- (i) what they found particularly good about the lecture,
- (ii) how they thought this lecture could have been improved, and
- (iii) what other topics they would like to be covered

Prior experience of Moteclife-UK

79% of respondents have heard of Moteclife-UK before this trip. 14% had not and 7% of questionnaires drew no response. See Fig. 5. All those who have heard of Moteclife-UK prior to this trip encountered the group at similar lectures on previous trips.

Fig. 5

Have you heard of Moteclife-UK before today



What was particularly good about this lecture?

Respondents said that what was good about this lecture was simple and easily understood. There was also comment to the effect that the mnemonic "ABCDE" was very helpful.

What could have been improved?

The only comment for improvement was that handouts should be provided. *Several respondents repeated this comment.* There was another comment for the lecturer to slow down to enable note taking, which in my view is closely related to the availability of handouts.

Future lecture topics

The following topics were suggested for future lectures.

1. Heart conditions
2. Benign Prostatic Hypertrophy
3. Hypertension
4. Unconscious patient

Conclusions

The lecture was timely and relevant to the educational needs of nursing student of Holy Family Nursing Training College, Nkawkaw. It was well received and was highly recommended by those who attended the lecture. Most respondents believed that the information was applicable to their work and would enable them to do their work better.

The main comment on what could have been improved was the fact that most people wanted the lecture handouts before the lecture. The handouts were later left on the school computers at the library.

My recommendation is that in the event that handouts are not given at the beginning of the lecture the students should be told if any would be available later. However the issue of handouts is best left to the discretion of the lecturer.

At Nkawkaw hospital, as with all District General Hospitals in Ghana, General Practitioners who man the emergency unit are also responsible for the management of acute trauma. Often who do their best with very limited resources have no particular training in trauma. This is a situation that pertains to most District General Hospitals in Ghana². It would therefore be a worthwhile exercise for the medical staff, especially the General Practitioners who man the accident and emergency units to have regular updates, so they should be made aware of lectures like this and protected time given to enable them to attend.

A recent report, for MIDA-IOM, by Dr Conrad Buckle³ mentioned setting up an ATLS training as one of its recommendation. Until that is in place lectures like this one would help update health workers.

² Buckle, Conrad, MIDA GHANA HEALTH PROJECT CHAG TRAUMA CARE INITIAL ASSESSMENT, Document number - MIDA-IOM/CB/001/2006 prepared for MIDA-IOM and NCHS Ghana

³ Ibid